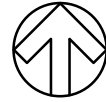


- NOTE:**
1. PLAN TO BE ACCOMPANIED BY THE DRAINAGE STATEMENT
  2. ALL LOCATIONS OF MANHOLES ARE INDICATIVE ONLY.
  3. ALL COVER LEVELS & INVERT LEVELS ARE INDICATIVE ONLY.
  4. STORAGE REQUIREMENTS BASED ON THE PRELIMINARY STORAGE ESTIMATES:

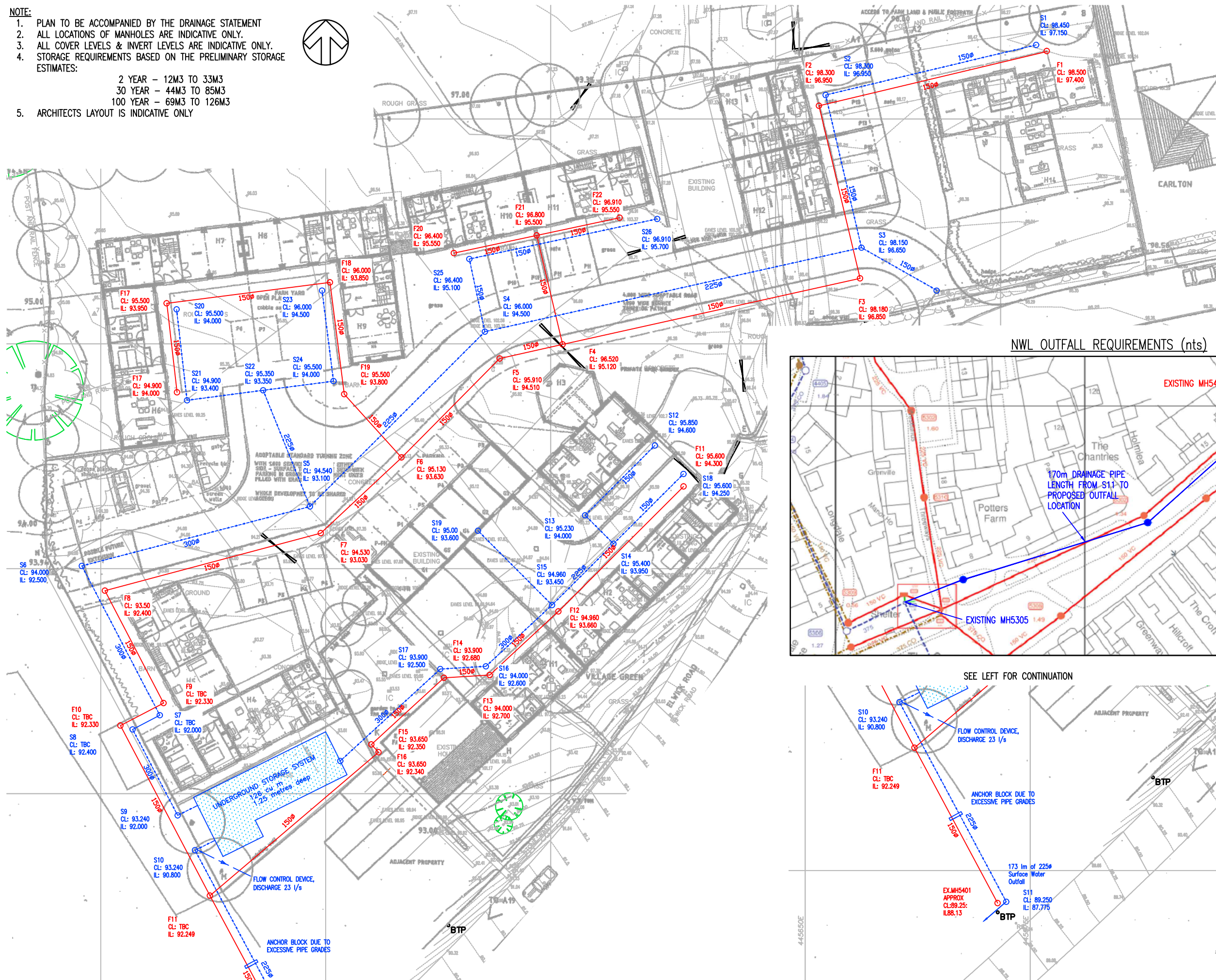
2 YEAR - 12M3 TO 33M3  
 30 YEAR - 44M3 TO 85M3  
 100 YEAR - 69M3 TO 126M3

5. ARCHITECTS LAYOUT IS INDICATIVE ONLY

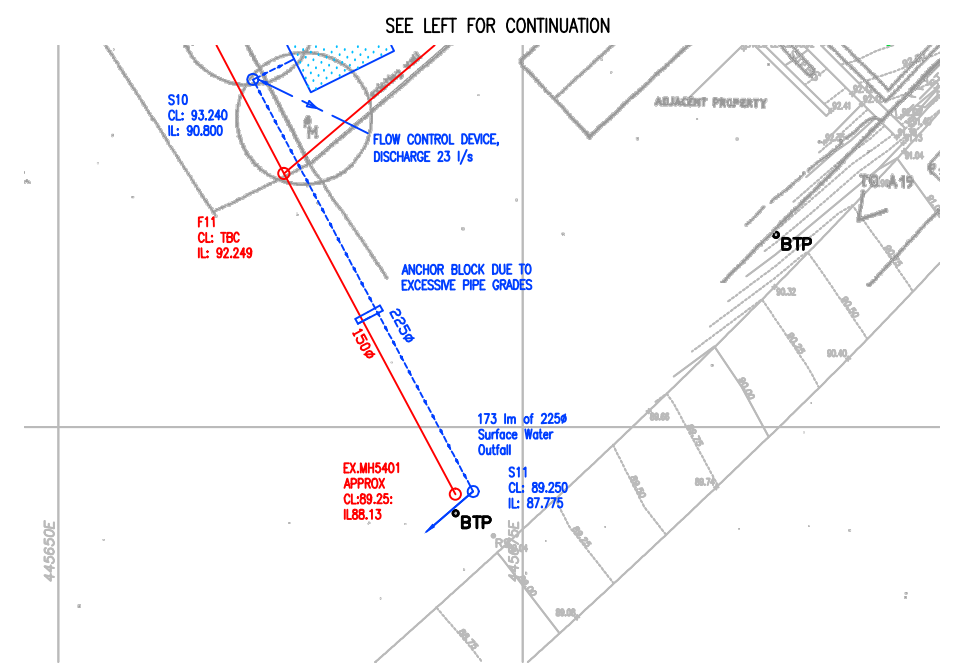
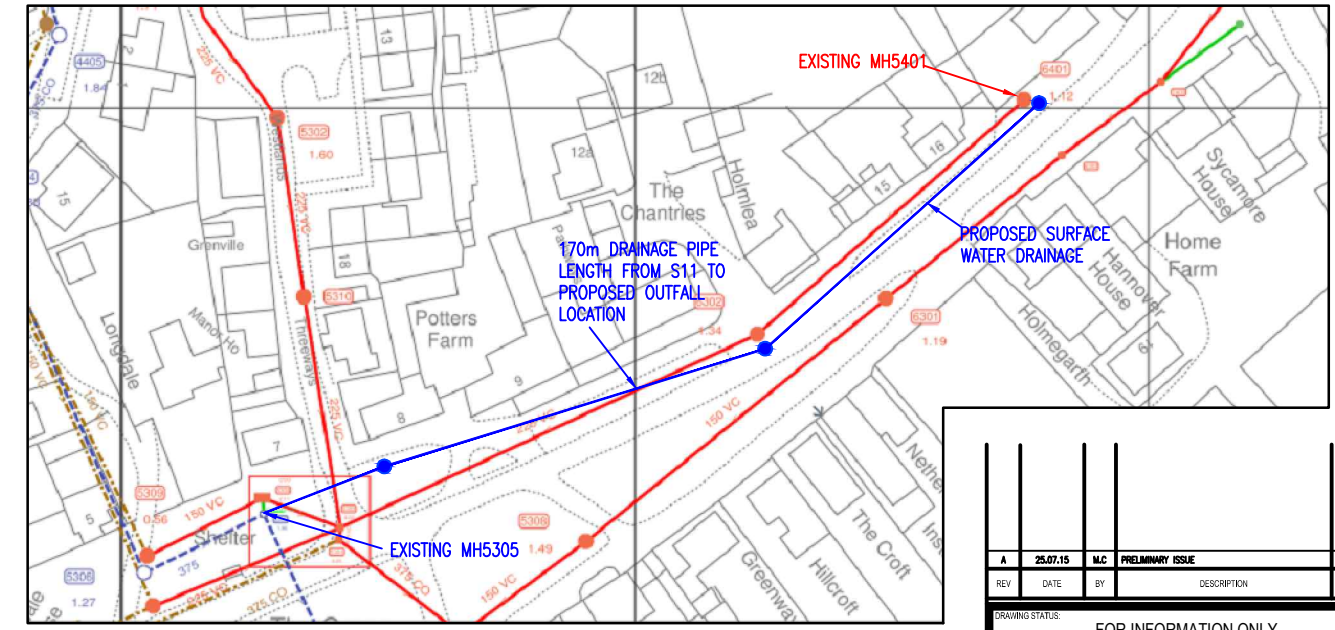


DO NOT SCALE

- KEY:**
- PROPOSED FOUL SEWER, MIN. 150mm DIA
  - CL:XXX PROPOSED FOUL MANHOLE COVER LEVEL
  - PROPOSED SURFACE WATER SEWER, MIN. 150mm DIA
  - CL:XXX PROPOSED SURFACE WATER MANHOLE COVER LEVEL
  - CELLULAR STORAGE



NWL OUTFALL REQUIREMENTS (nts)



SEE BOTTOM RIGHT FOR CONTINUATION

REV	DATE	BY	DESCRIPTION	CHK	APP
A	25.07.15	MC	PRELIMINARY ISSUE		

DRAWING STATUS: FOR INFORMATION ONLY

**WSP | PARSONS BRINCKERHOFF**  
 Weymouth House, Hampshire Court, Newcastle Business Park  
 Newcastle upon Tyne, NE4 7YG  
 Tel: +44 (0)191 273 3123, Fax: +44 (0)191 226 1791  
 www.wspgroup.com www.pbworld.com

CLIENT: Margaret Iverson

PROJECT: NORTH FARM, ELWICK, HARTLEPOOL  
 TITLE: PRELIMINARY DRAINAGE LAYOUT

SCALE: B1: 1:200	CHECKED: MC	APPROVED: PWW
CAD FILE: C0002	DESIGN-DRAWN: MC	DATE: June 2015
PROJECT No: 70012327	DRAWING No: C0002	REV: A